

Memory Improve Ultimate

WindowsCare Technology Inc.

www.windowscarepro.com

Pages Order

Introduction.....Pages 3

Purchase Memory Improve Ultimate.....Pages 4-5

Use Memory Improve Ultimate.....Pages 6-22

About WindowsCare Technology.....Pages 23

FAQs.....Pages 24-26

www.windowscarepro.com

Introduction

Memory Improve Ultimate is powerful memory optimizer software designed to improve and monitor system memory. It can free up wasted RAM automatically and compresses system memory to make processes run faster with greater stability. It still has the ability to view and monitor data of RAM memory, paging file usage and CPU usage in real time.

It is a feature-rich yet easy-to-use program. **Memory Improve Ultimate** designed a recommend button for new users to operate easily.

It is such a tool designed for both new users and advanced users.

Advantages of using Memory Improve Ultimate

- Free memory automatically
- Defrag parameters in the background
- Monitor system and automatically optimize it when needed without interrupting your work
- Display memory in real time
- Show space of occupied paging file
- Adjust priority of CPU allocation automatically
- Learn user's habit constantly
- Analyze and recognize the frequently used applications
- Stop processes and programs or reclaim memory occupied by listed processes

Purchase Memory Improve Ultimate

Free Version Limitations:

Time Limitation: Maximum 14 free trials within 7 days.

Service Limitation: Neither customer service, nor upgrade for full version.

Registration Benefits:

Full functions

Users can enjoy full functions of Memory Improve Ultimate, fun in unlimited memory monitoring.

Free upgrade

Free online upgrades on main version with Lifetime Upgrade Policy.

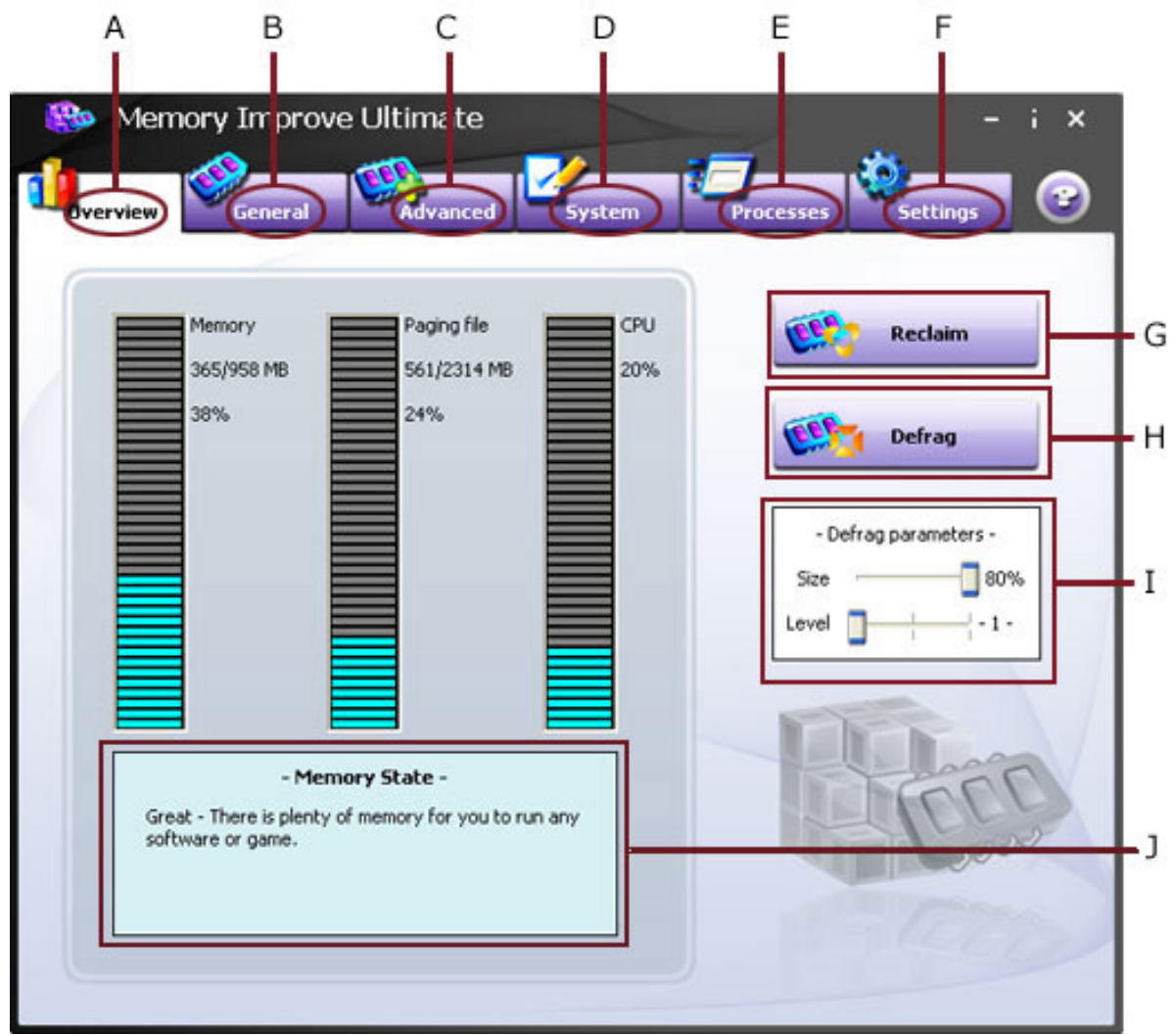
Free technical support

We are pleased to offer our care to meet your needs. We promise our customers, any customer questions will be replied within 1 business day!

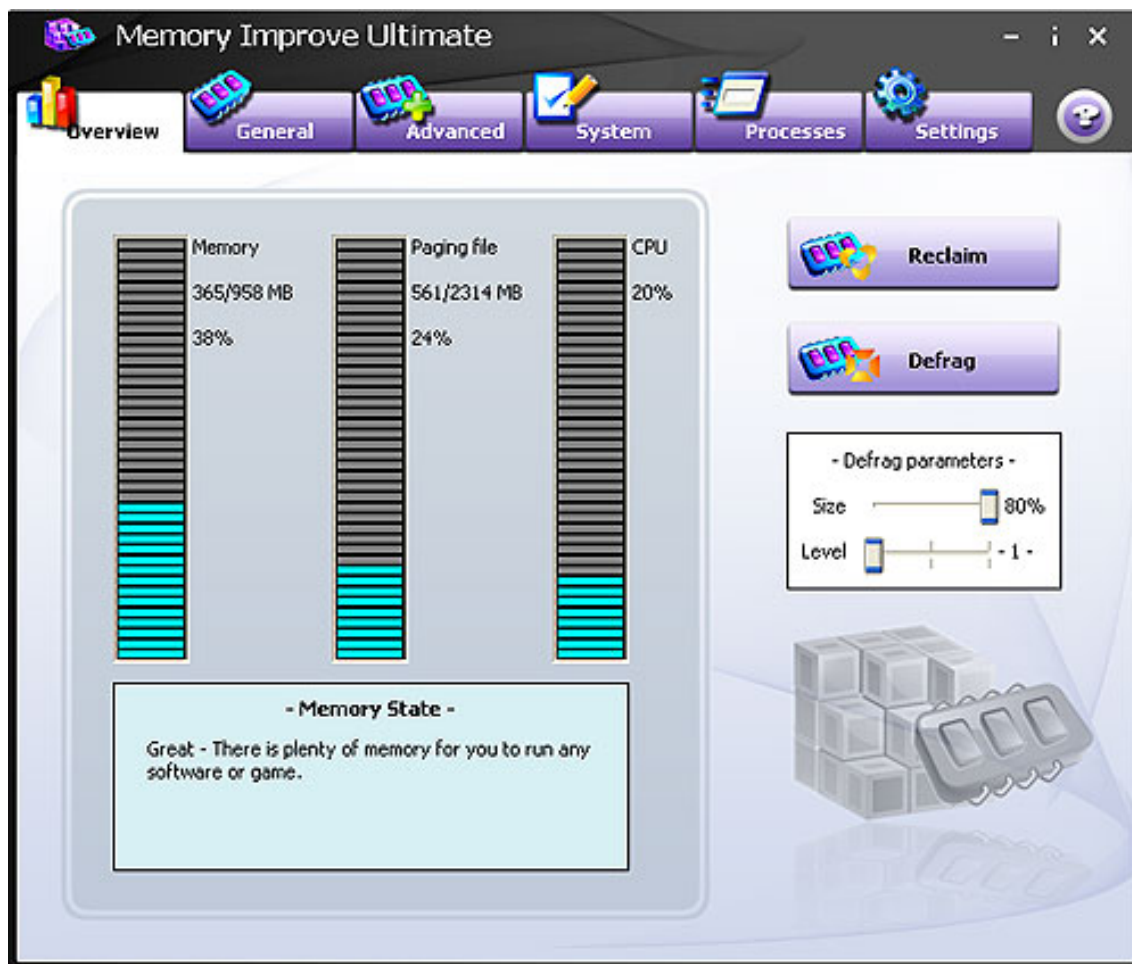
Product	Version	Price per unit	Order
Magic Memory Ultimate	5.1.0.5538	US \$15.99	Buy Now

Overview

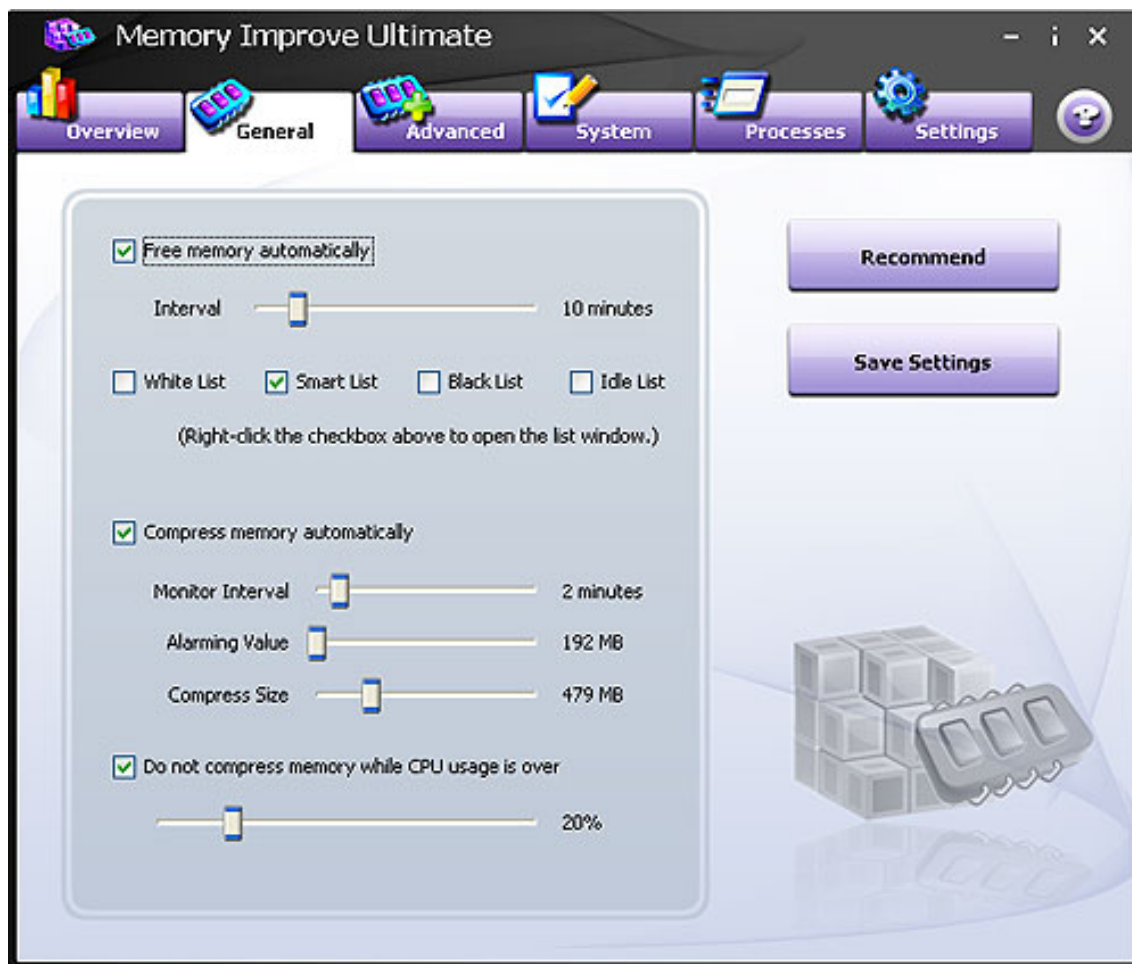
Learn the information about Memory Improve Ultimate before you start using it.



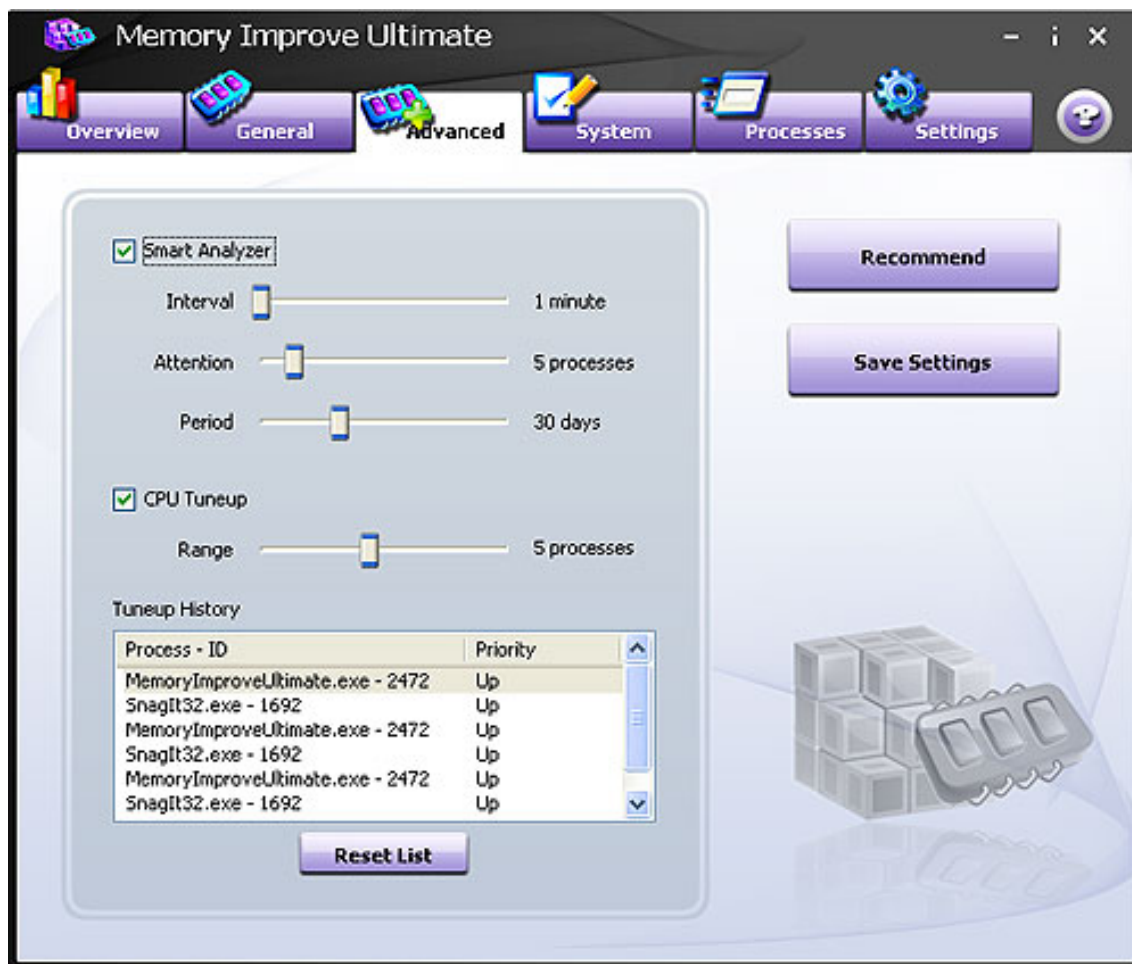
A: [Overview tab](#): Indicates the physical memory status.



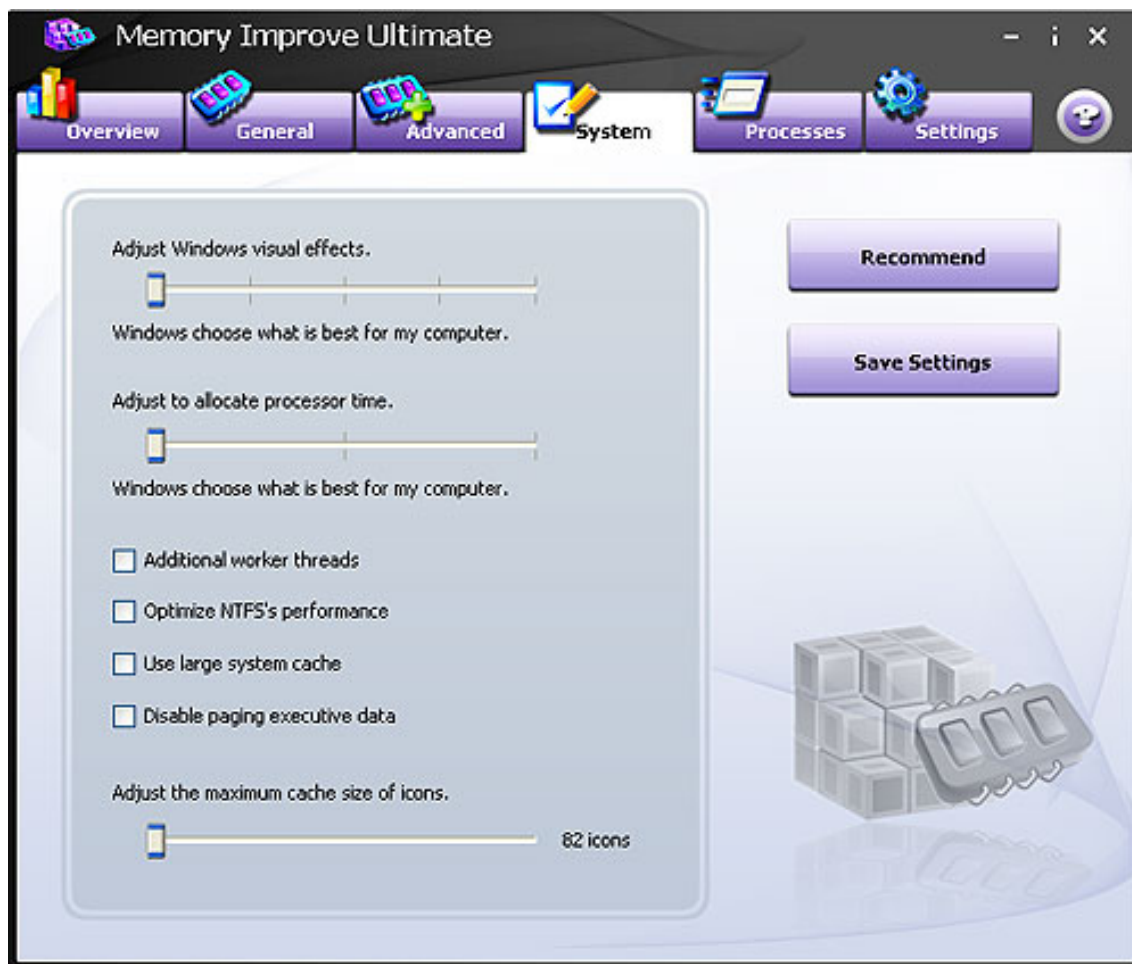
B: [General tab](#): Set parameters to free memory or compress memory.



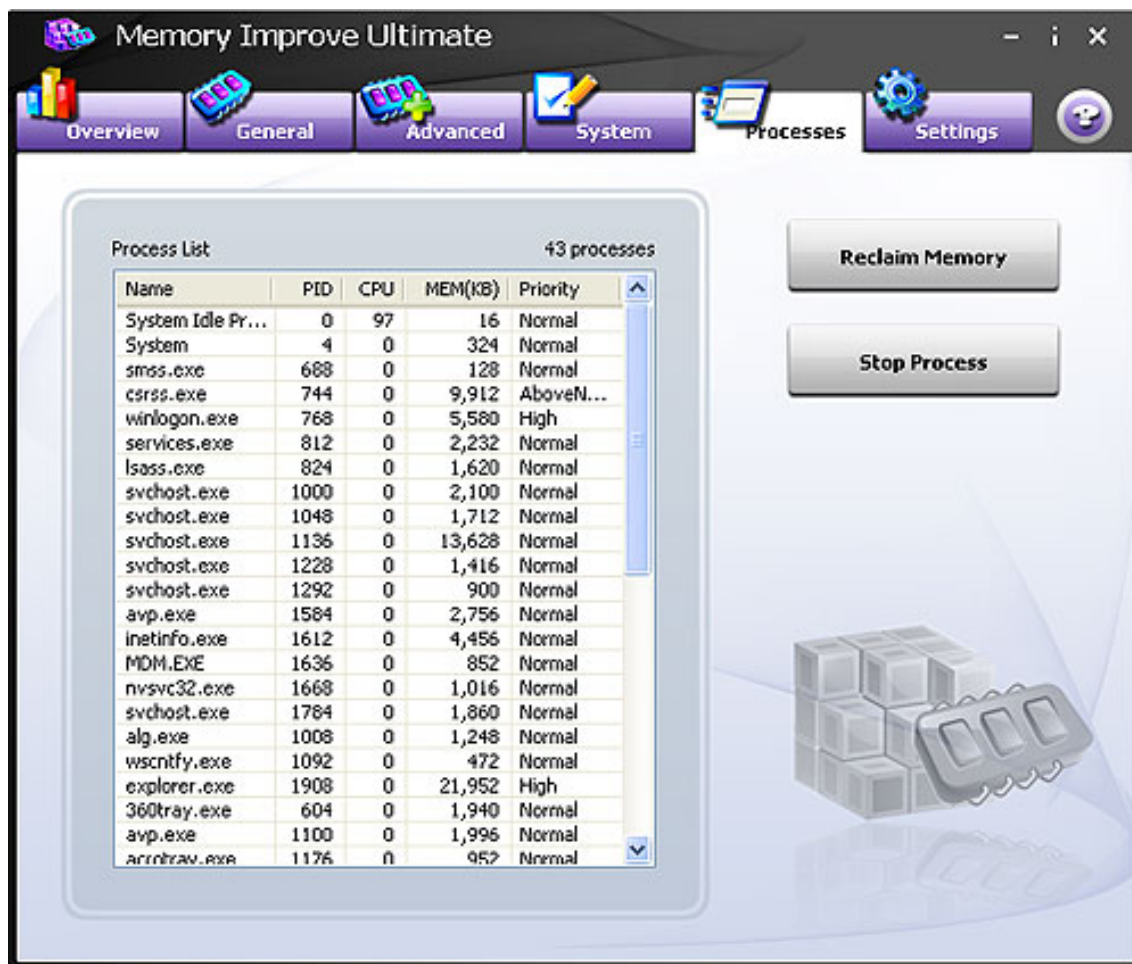
C: [Advanced tab](#): Set parameters to run smart analyzer and tune up CPU.



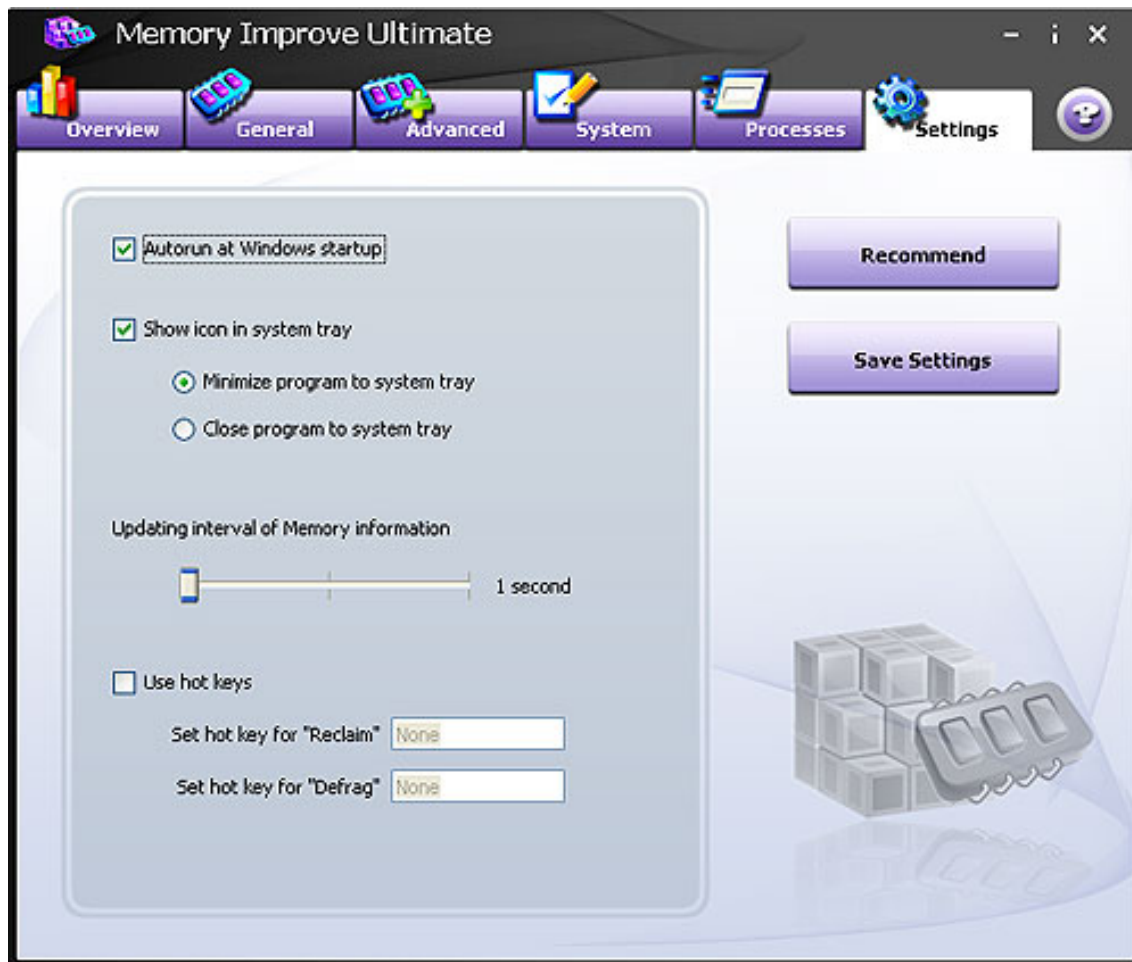
D: [System tab](#): Set settings such as visual effect and processor time to optimizes system performance.



E: [Processes tab](#): Reclaim fixed process memory or stop process.



F: [Settings tab](#): Set configurations of Memory Improve Ultimate.



G: Reclaim button: Free memory manually.

H: Defrag button: Compress memory manually.

I: Defrag parameters: Set desired parameters for compressing memory task.

J: Memory State: Detect the system memory usage in the background, and display your current state in real time, such as great, good, medium and bad.

How to free memory

Memory Improve Ultimate will help you to free memory automatically:

1. Users can just click the "Reclaim" button on overview window to free memory quickly.

2. Users can tick the "**Free memory automatically**" checkbox on general window and set the following relative parameter:

Interval glide bar:

Users can set the time interval by moving the glide bar, ten minutes recommend.

Rule lists:

Users can select one or two list ("**White List**", "**Auto list**", "**Black List**", "**Idle list**") as reference rule:

White list: The processes listed in white list will be permitted to use physical memory unlimitedly. When you free up memory automatically, the memory used by these processes in white list will not be freed while memory used by the processes unlisted in White list will be freed. Just add frequently used processes in White list.

Auto list: Auto list can be considered as an intelligent White List, however, it is not edited manually by user, but generated and maintained by the process automatically. The unique intelligent learn module of Memory Improve Master will learn user's habit constantly, analyze and recognize the applications used by user,

then add these frequently used applications into Smart List automatically.

Black list: The memory used by processes listed in black list will be released directly when you perform "Free up memory" operation.

Idle list: Idle List can be considered as a dynamic Black List. If the usage of a process is "0", the process will be added into Idle List automatically. The memory used by processes listed in Idle list will be released. Data in Idle List is dynamic and does not need editing.

www.window scare pro.com

How to compress memory

Users can compress memory in minutes. However, compress memory can be performed only when a great deal of free memory space needed. Never perform the operation frequently.

Users can compress memory manually or automatically:

1. Users can just click the "Defrag" button on overview window to compress memory quickly.

2. Users can tick the "**Compress memory automatically**" checkbox on general window and set the following relative parameter:

Monitor interval:

Users can specify time interval by moving the glide bar, 2 minutes recommend .

Alarming value:

Users can specify alarm value on the bar. Memory Improve Ultimate will compress memory if available memory falls below specified value, and 192MB recommend.

Compress Size:

Users can specify desired amount of memory by moving the glide bar, the recommend size is 479MB

Users can specify a percentage after ticking the box in front of "Do not compress.." to enable CPU protection when CPU usage exceeds specified value.

www.windowcarepro.com

Smart Analyzer

Memory Improve Ultimate has an intelligent optimization module. It can continually analyze the system running way then take the result as a reference to reclaim memory.

To monitor the smart analyzer, you must specify these parameters:

Interval

Users can select the time interval among 1~60 minutes, one minute recommend.

Attention

Users can select a number among 1~30. (If you select 3, Memory Improve Ultimate will add the top 3 of the most frequently used processes in "Tune up History"), 5 processes recommend .

Period

Users can select a time period among 1~90 to keep data collected by intelligent analyzing module.

CPU Turnup

Memory Improve Ultimate has an intelligent optimization module. It can continually monitor CPU usage in real time and adjust priority of CPU allocation automatically.

To make applications run more effectively, you must specify these parameters:

Range

Users can select value among 1~10. E.g. select 4, then 4 applications that have been used recently may take the priority to use CPU.

At the bottom of the advanced window, a box shows the turnup history lists. Users can get detailed information of the history moments, and clear the lists by clicking the button "Reset List".

www.window scare pro.com

System Window

On System Window, users can adjust system performance by changing settings below:

Adjust windows visual effects:

Users can move the glide bar to choose five situations at will, such as: best for my computer , best appearance, best performance, custom and balance appearance and performance.

Adjust allocate processor time:

Users still can move the glide bar to choose three situations at will, such as: best for my computer, more processor time for applications and more processor time for background services.

Adjust maximum cache size of icon:

Users can move the glide bar to choose the number of icons, it is among 82~8192 icons, and the recommend number is 2048

Additional worker threads:

Increase additional critical and delayed worker threads.

Optimize NTFS performance:

Forbid NTFS to update the last-access timestamp on each directory when it lists the directories on an NTFS volume.

Use large system cache:

Let the system maintain a large size file system cache.

Disable paging executive data:

Do not use paging executive data when it not in use.

Note: The Default settings are suggested. It is NOT recommended to apply these settings blindly unless you are an advanced user or are confident of the function of each setting.

www.window scarepro.com

Processes Window

The "Processes" window presents you all running processes on your PC, whether they are in the background or foreground. It shows how much RAM each program is using.

Reclaim Memory: Users can select a process in the list first, then release memory by clicking "Reclaim Memory" button or right clicking a process in the list and selecting reclaim memory.

Stop Process: Users can select a process in the list first, then terminate a process by clicking "Stop Process" button or right clicking a process and selecting stop process.

www.window scare pro.com

Settings Window

Auto run at windows startup: Tick the box to run Memory Improve Ultimate on Windows startup.

Show icon in system tray: Users can minimize or close program to system tray after you check it.

Use hot keys: After checking the button, users can specify the key combination, and then Memory Improve Ultimate will reclaim memory or defrag memory whenever you press the specified key combinations.

Updating interval of memory information: Set a interval among 1 ~3 second to refresh memory information.

www.windowscarepro.com

About WindowsCare Technology Inc.

WindowsCare Technology Inc. is a software company founded in 2004. Being a developer of Windows Operating System solutions, **WindowsCare** take the lead in this domain. We have professional engineers and excellent development team, and all of our products are backed up by our excellent team to provide world class software and our unconditional 30-day money-back satisfaction guarantee.

Contact us:

Address:

WindowsCare Technology Inc.

7601 Via Santae Ln

Wilmington IL 60462

USA

Email:

General contact: support@windowscarepro.com

Sale contact: sales@windowscarepro.com

For further information, please visit www.windowscarepro.com

www.windowscarepro.com

FAQs

Is online order secure?

Yes, it is 100% secure. We promise the most secure purchase as we did for years. You can trust us.

How to report bugs?

Please bugs or suggestions to support@window scarepro.com . We will reply within 24 hours.

Is Technical Support provided?

Yes, FREE technical support is provided for all registered users. If you have queries, suggestions or feedback, please feel free to contact our technical team: support@window scarepro.com

How can I reinstall the program?

If you are a registered user, just enter the license you had before, and then you could use it as usual.

Why is it so important?

Memory is important because it's what keeps your computer running quickly. When you have a lot of programs running, which may consume all your memory, and then your computer has to use your hard disk for memory. Because hard disks are almost a hundred times slower than memory, your computer slows to a crawl when it runs out of memory. It also often becomes unstable.

Can Memory Improve Ultimate make my system unstable?

No. It increases the amount of available memory to applications. Your system will become more stable.

What are the differences between trial version and full version?

Trial version of the software can be downloaded for free which works effectively for maximum 14 free trials within 7 days. After 7 days the software expires and you need to purchase Full version of the software. A lifetime license for full functions of Memory Improve Ultimate can be purchased for only **\$15.99**.

Will Memory Improve Ultimate Speed Up My Computer?

Memory Improve Ultimate frees up more RAM memory, your computer would be able to process information faster.

Can Memory Improve Ultimate free memory with hotkey?

Of course, on **Settings** tab, check "**Use hot key**", You may specify the key combination you wish to use, and click save button, then Memory Improve Ultimate will free memory whenever you press the specified key combinations.

I have registered the software, but lost my registration details - what can I do now?

It is very important that you save your Original Receipt (at least your Order ID) or Registration Email. If it is lost, we will need the email address you used while registering, as we will send the registration details only to the Registration email address.

How can I get additional support for Memory Improve Ultimate?

Please visit our [website](#) to get additional product information, help, and support.

www.windowcarepro.com
